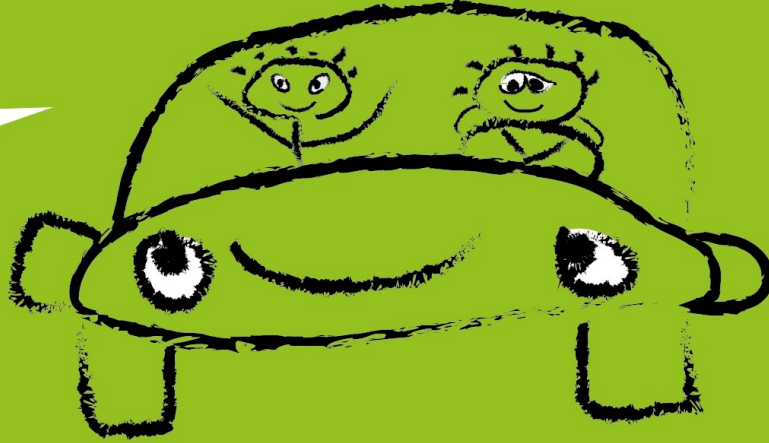


HAPPY TO HELP



Community Lift Scheme

Do you find it difficult to use the bus?

Do you need to get to an appointment or run an important errand?

A local driver, from **Stratton on the Fosse community lift scheme**, could take you from door to door, return journey, for as little as £2.50!

Book your lift on 07932 494780

Who is the scheme for?

The Stratton on the Fosse community lift scheme is a non-profit organisation, run by residents of the village. It is for local people who do not have their own transportation and who find it difficult to use public transport. The scheme is to help with essential journeys such as medical appointments, collecting prescriptions, trips to the Post Office etc. at affordable cost.

Where can the lift scheme take me?

The lift scheme offers return journeys to neighbouring villages at a set price (see below). This means that you know the exact cost of your journey before you book it. If you need to travel to somewhere further away, this can be arranged and the cost calculated for you. Your local driver will pick you up from home and take you straight to your destination, where they will wait for up to 45 minutes before bringing you back to your door.

How do I use the community lift scheme?

To arrange a lift simply contact us, no less than 48 hours in advance, on **07932 494780** with the date, destination and time you need a lift. We will make the arrangements and call you back with the name of your driver and the cost of the journey (if different from the set prices).

Set lift prices (return journey from Stratton on the Fosse)

Chilcompton surgery	£2.50
Oakhill surgery	£3.50
Midsomer Norton Post Office	£3.50
Royal United Hospital, Bath	£15.00